



Itaú Asset Management
ESG

Acompanhe a
Itaú Asset nas
redes sociais



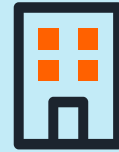
ESG at Itaú Asset Management



Environmental, social and corporate governance aspects are part of the investment decision process.

We have an exclusive Unit to integrate ESG in different strategies and asset classes.

Learn more about our ESG integration models in our White papers.



Engagement With companies

We promote best ESG practices for investees.

Investing with Itaú Asset contributes to the promotion of better environmental, social and corporate governance practices.



Proxy voting

Participation in shareholders' meetings has the purpose of promoting best ESG practices.

Good corporate governance practices promote a greater

alignment between the interests of both, companies and their investors.

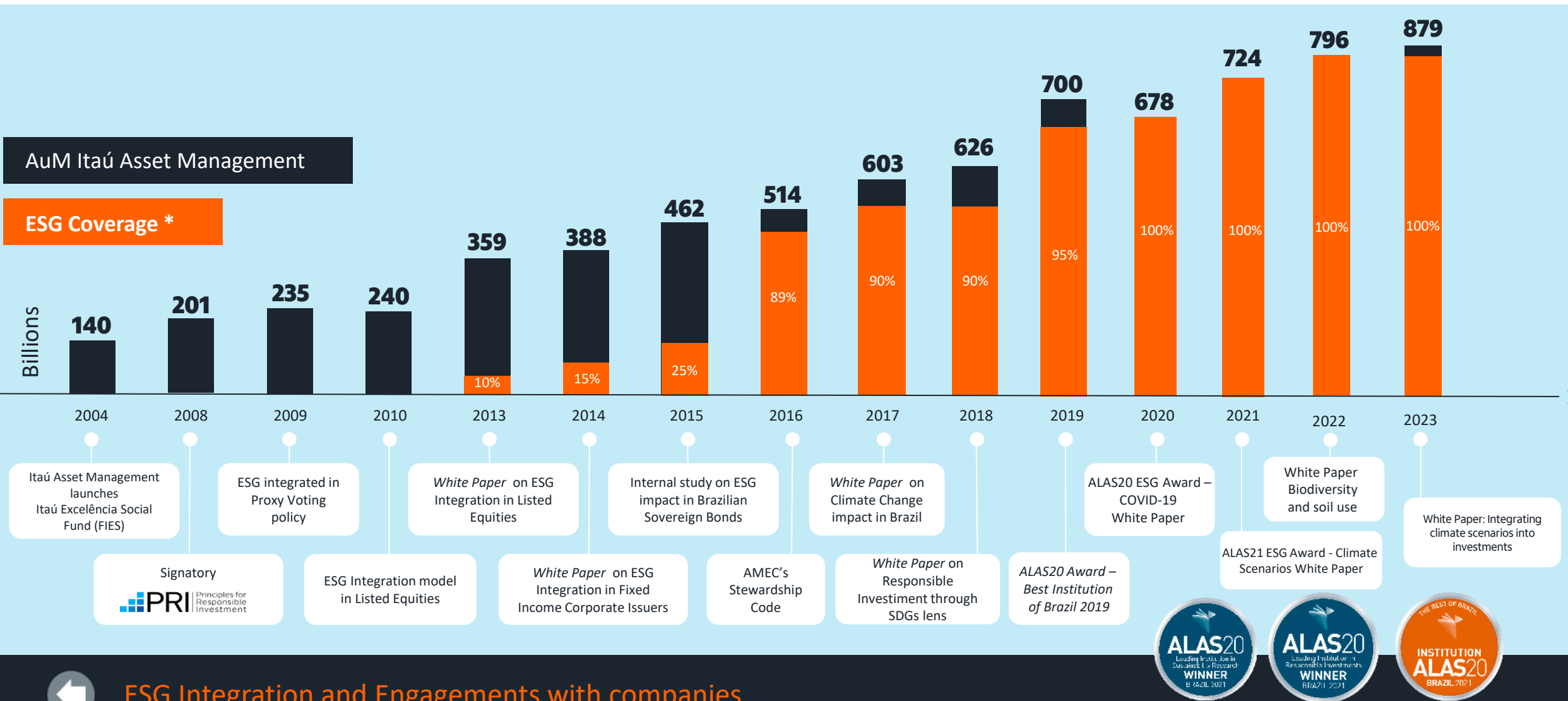


ESG dedicated products

ESG dedicated products can promote exposure to companies with best ESG practices or companies operating in industries or sectors with positive ESG outcomes.



ESG at Itaú Asset Management

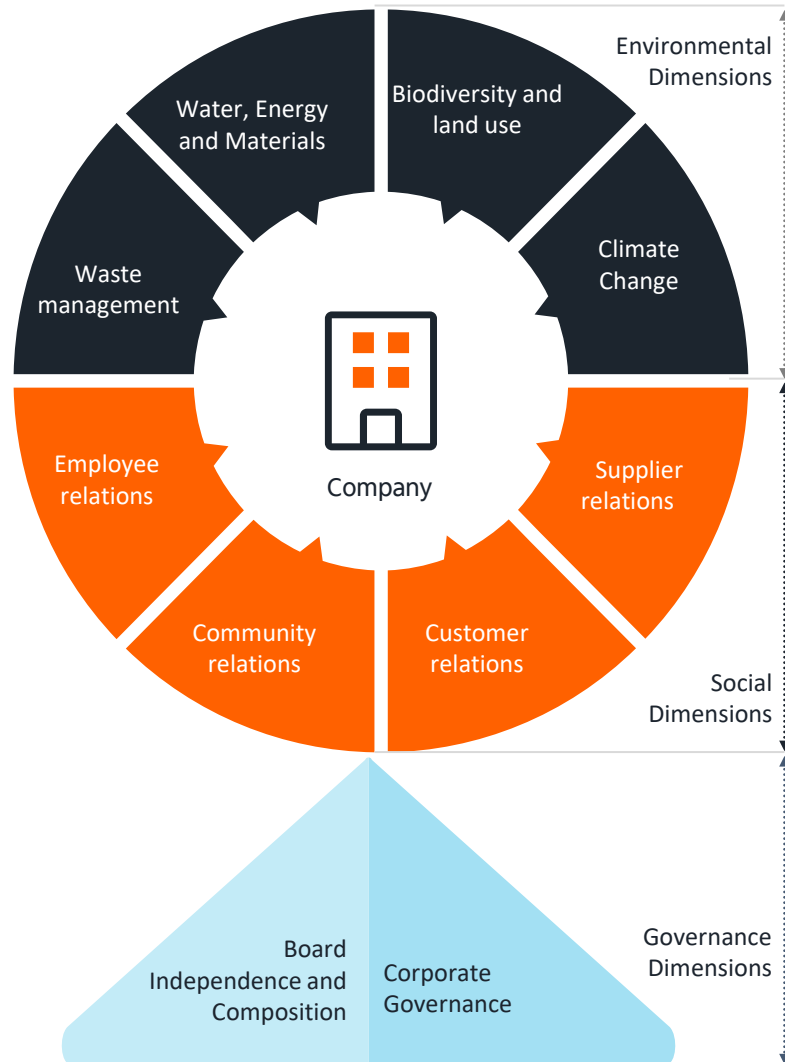


ESG Integration and Engagements with companies

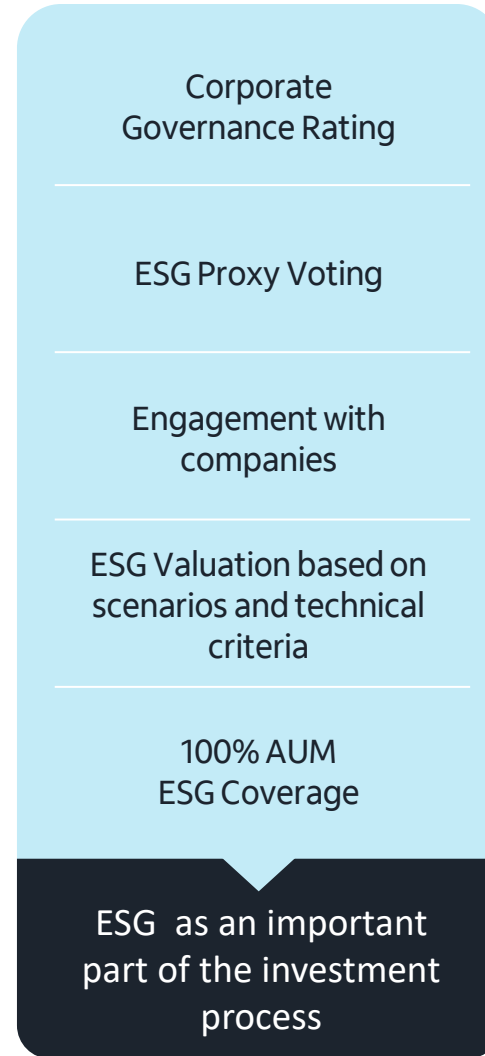
* 100% coverage of eligible assets at Itaú Asset Management

ESG at Itaú Asset

What we do?



How we do?



Why we do?

New business opportunities

Ex.: Eletric Vehicles

Anticipate legal liabilities

Ex.: Telecom Sector in Brazil

Reduction in production costs

Ex.: Water reutilization

Positive reputation

Ex.: Positive impact in cost of capital

Source: *The Reference Compendium on Business and Sustainability*, University of Cambridge Programme for Industry, 2004 (interpretação e adaptação Fundação Brasileira para o Desenvolvimento Sustentável) | Extraído do Guia Novo Valor -Sustentabilidade nas Empresas da BM&FBovespa 09.set.2016

Itaú Asset Management

Proxy Voting

To increase the participation on invested companies' shareholder meetings with the purpose of promoting better corporate governance and environmental and social management practices

Governance
Proxy Voting Policy dictates participation

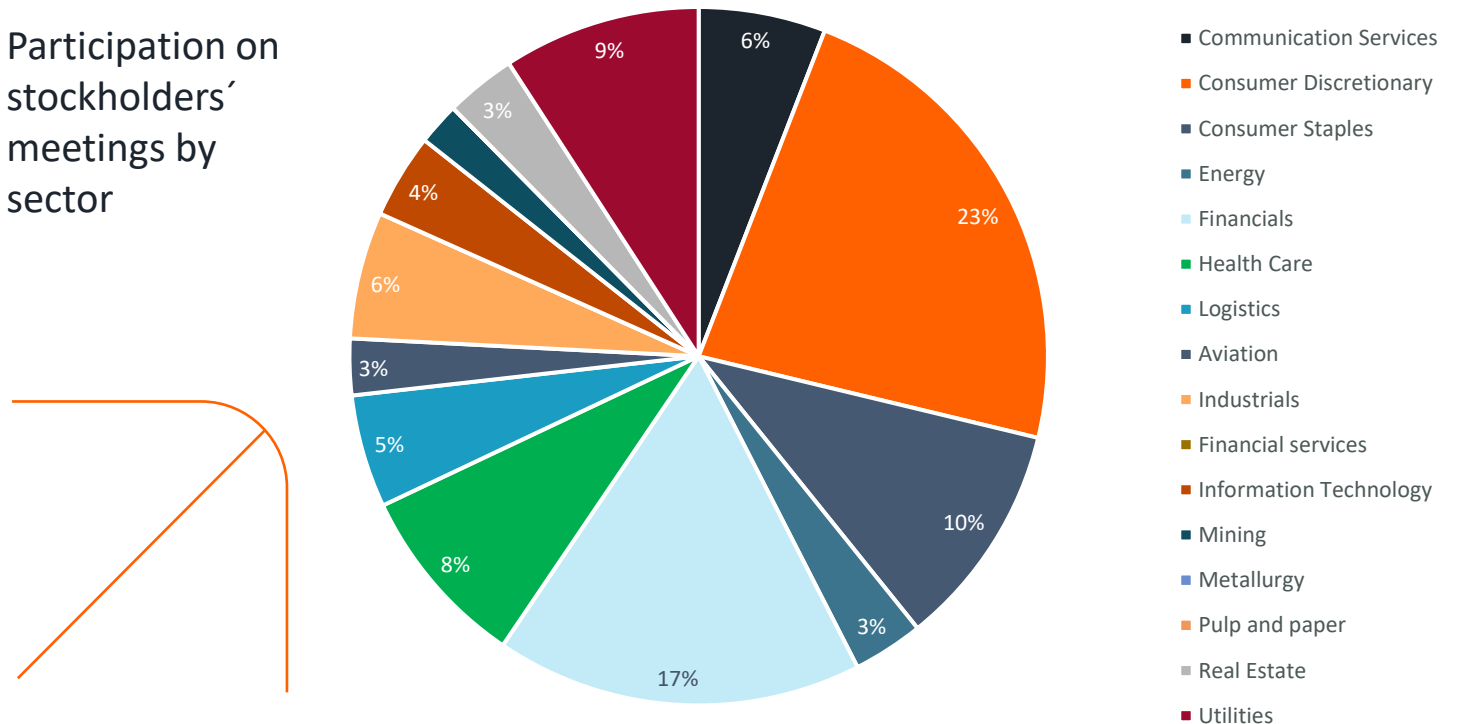
Process

- ESG Analyst
- Coordinates the voting process
- Recommends the vote and better ESG practices

Results

- Participation on 236 stockholders' meetings in 2023
- Details available on the AMEC Stewardship Report

Participation on stockholders' meetings by sector



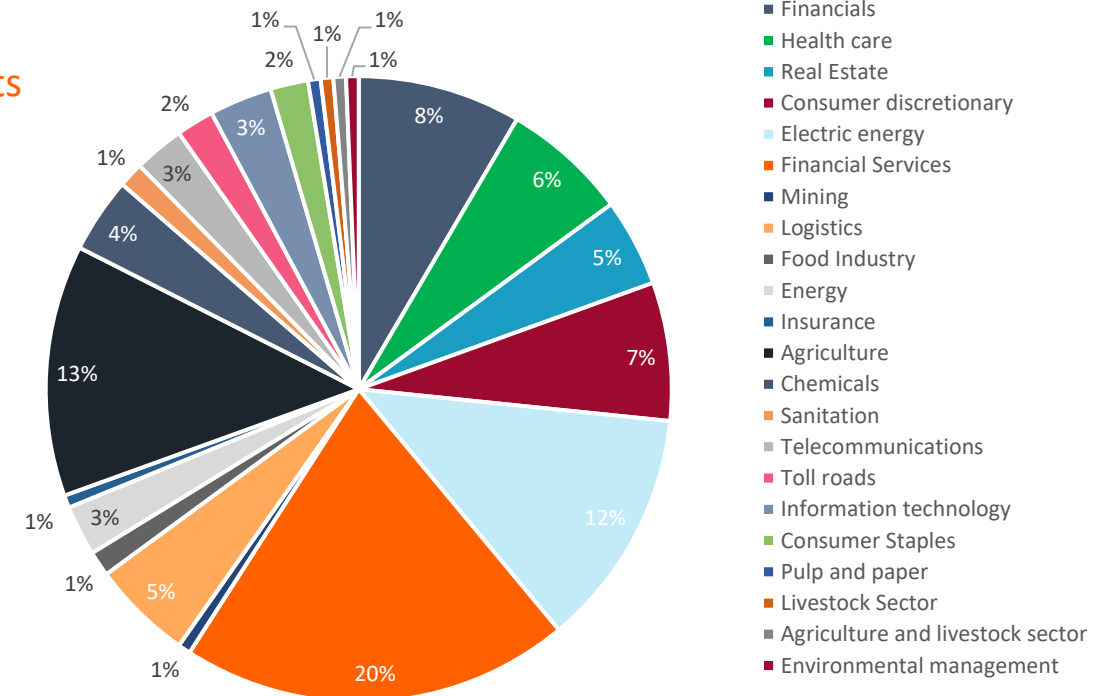
Itaú Asset Management Engagements

The purpose is to promote best ESG practices, and to establish a material dialogue and to deepen the understanding of how certain ESG matters can impact their market value. Responsible Investment Policy- Itaú Asset Management

Collective engagements (with other portfolios managers) and their purposes:

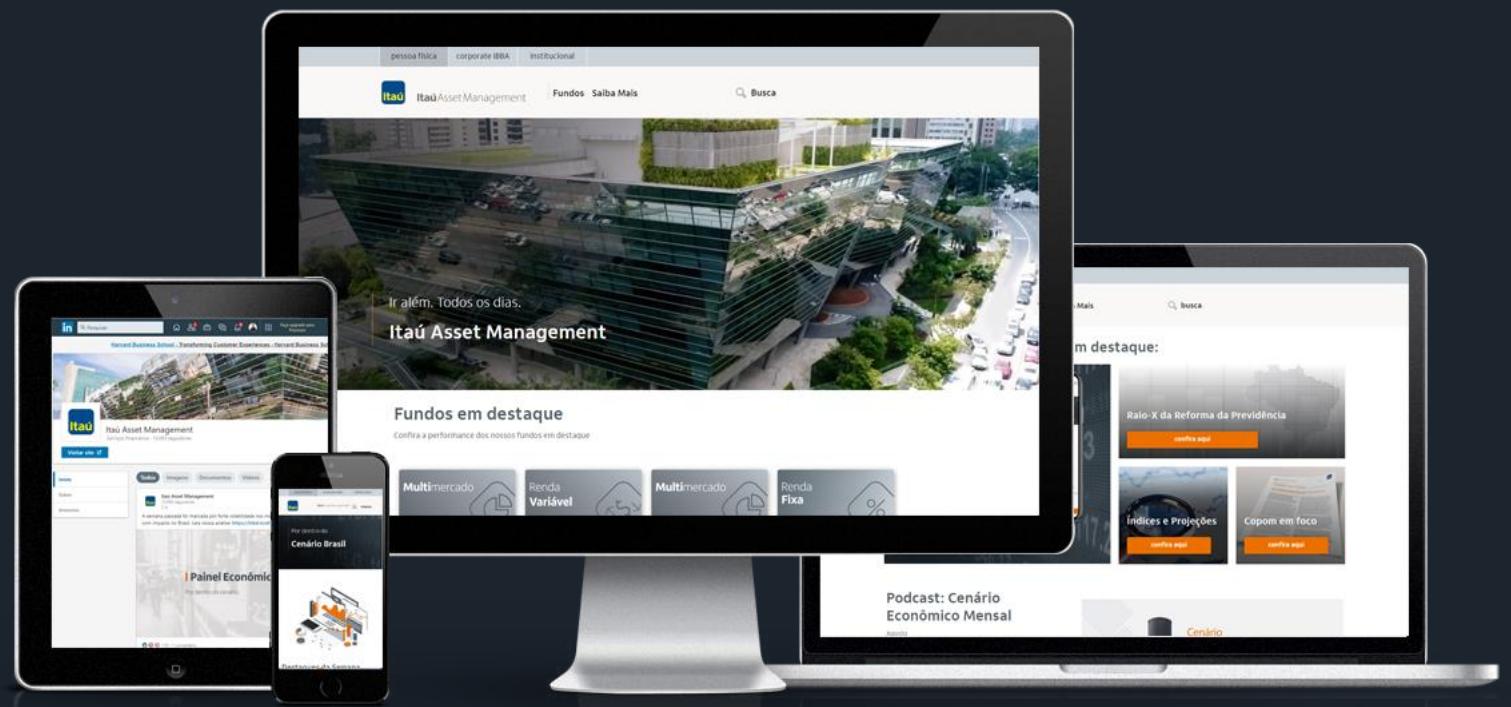
- Investidores pelo Clima (IPC)
 - To promote the disclosure of information concerning climate change and its financial impacts
- IPDD
 - Engagement with public entities and sectorial associations about policies for halting deforestation
- PRI Practices
 - Discussion of better practices for ESG analysis of companies among portfolios managers signatories of the Principles of Responsible Investment

Individual engagements (2023): 152 interactions





Acompanhe a
Itaú Asset



www.itaubase.com.br

